



## **Description**

1. Opening sizes of filter net are 3 times of main road sizes, permitting effective reduction for flow resistance.
2. High-strength stainless steel filter net prevents deformation caused by impact of water flow.
3. Machining seat is provided in valve body and thread seat in bonnet for accurate alignment of filter net.
4. Special fare-type opening set at the upstream end of filternet, in unique construction, permit fluid passing through filter without any blockage.
5. The device with rapid blow-down switch is available for clearance of dirt.

## **Selection of possible applications**

Heat exchangers, Storage vessels, Boilers Jacketed pans, Sterilizing chambers, Steam mains, oil, Other Liquids

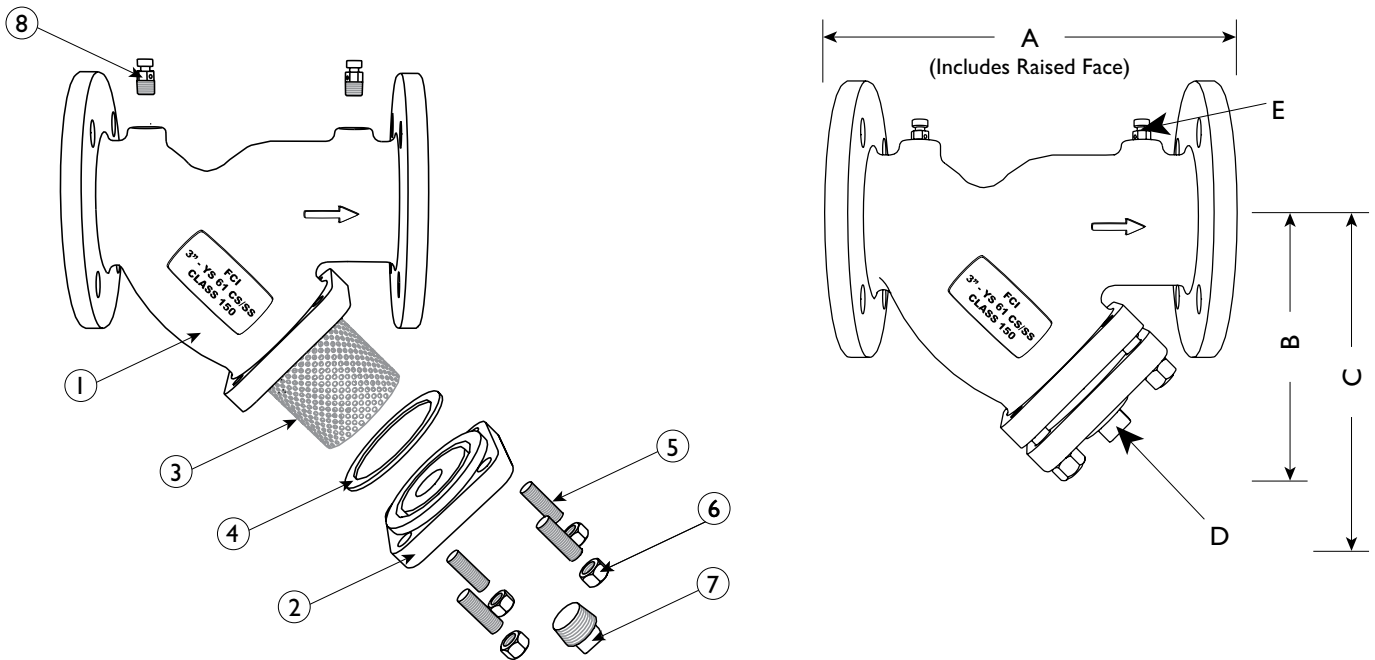
## **Selection of possible flow media**

Steam, Oil, Water, etc.

**DIMENSIONS AND PERFORMANCE DATA**

| SIZE               | in             | ½    | ¾    | 1    | 1¼   | 1½   | 2    | 2½   | 3     | 4     | 5     | 6     | 8     | 10    | 12    | 14    | 16    | 18    | 20    | 24    |       |
|--------------------|----------------|------|------|------|------|------|------|------|-------|-------|-------|-------|-------|-------|-------|-------|-------|-------|-------|-------|-------|
|                    | mm             | 15   | 20   | 25   | 32   | 40   | 50   | 65   | 80    | 100   | 125   | 150   | 200   | 250   | 300   | 350   | 400   | 450   | 500   | 600   |       |
| <b>A</b>           | in             | 6.50 | 7.37 | 7.37 | 7.00 | 7.12 | 7.87 | 9.75 | 10.06 | 12.12 | 15.62 | 18.50 | 21.37 | 26.00 | 29.87 | 36.00 | 41.75 | 46.00 | 49.50 | 58.37 |       |
|                    | mm             | 166  | 188  | 188  | 178  | 181  | 200  | 248  | 256   | 308   | 397   | 470   | 543   | 661   | 759   | 914   | 1060  | 1168  | 1257  | 1483  |       |
| <b>B</b>           | in             | 3.50 | 3.75 | 3.75 | 4.75 | 4.75 | 5.25 | 6.50 | 7.00  | 8.25  | 11.25 | 13.50 | 15.50 | 18.50 | 22.25 | 25.00 | 26.50 | 31.00 | 39.00 | 45.00 |       |
|                    | mm             | 89   | 96   | 96   | 121  | 121  | 134  | 166  | 178   | 210   | 286   | 343   | 394   | 470   | 566   | 625   | 673   | 787   | 991   | 1143  |       |
| <b>C</b>           | in             | 5.00 | 5.00 | 5.00 | 7.00 | 7.00 | 7.00 | 9.75 | 10.00 | 12.00 | 20.00 | 20.00 | 22.75 | 28.00 | 30.00 | 36.50 | 42.00 | 45.50 | 56.00 | 68.00 |       |
|                    | mm             | 127  | 127  | 127  | 178  | 178  | 178  | 248  | 254   | 305   | 508   | 508   | 578   | 712   | 762   | 927   | 1067  | 1156  | 1422  | 1727  |       |
| <b>D</b>           | in             | 3/8  | 1/2  | 1/2  | 1/2  | 1/2  | 1/2  | 1    | 1     | 1 1/2 | 2     | 2     | 2     | 2     | 2     | 2     | 2     | 2     | 2     | 2     |       |
|                    | mm             | 10   | 15   | 15   | 15   | 15   | 15   | 25   | 25    | 40    | 50    | 50    | 50    | 50    | 50    | 50    | 50    | 50    | 50    | 50    |       |
| <b>E</b>           | in             | N/A  | N/A  | N/A  | N/A  | N/A  | 1/4  | 1/4  | 1/4   | 1/4   | 1/4   | 1/4   | 1/4   | 1/4   | 1/4   | 1/4   | 1/4   | 1/4   | 1/4   | 1/4   |       |
|                    | mm             | N/A  | N/A  | N/A  | N/A  | N/A  | 8    | 8    | 8     | 8     | 8     | 8     | 8     | 8     | 8     | 8     | 8     | 8     | 8     | 8     |       |
| WEIGHT APPROXIMATE | lb             | 5.5  | 10.3 | 10.3 | 12.0 | 12.5 | 21.0 | 32.0 | 35.0  | 55.0  | 90.0  | 140.0 | 220.0 | 356.0 | 644.0 | 1000  | 1600  | 2400  | 2700  | 5000  |       |
|                    | kg             | 2.5  | 4.6  | 4.6  | 5.4  | 5.7  | 9.5  | 14.5 | 15.9  | 24.9  | 40.8  | 63.5  | 99.7  | 161.5 | 292.1 | 453.6 | 725.7 | 1089  | 1225  | 2268  |       |
| Flow Coefficient   | C <sub>v</sub> | C/F  | C/F  | C/F  | C/F  | C/F  | 42   | 70   | 110   | 160   | 260   | 400   | 570   | 950   | 1600  | 2200  | 3300  | 4900  | 6100  | 8000  | 11000 |

1. Dimensions and weights are for reference only. When required, request certified drawings.
2. Face to face dimension includes raised face. These values have a tolerance of ±0.06 in (±2.0 mm) for sizes 10" and lower and a tolerance of ±0.12 in (±3.0 mm) for sizes 12" and larger.



**MATERIALS**

| No. | PART                | YS 60-DI                     | YS 61-CS                     | YS 62-SS                      |
|-----|---------------------|------------------------------|------------------------------|-------------------------------|
| 1   | Body (2)            | Ductile iron                 | Carbon Steel A216 Gr. WCB    | Stainless Steel A351 Gr. CF8M |
| 2   | Cover               | Ductile iron                 | Carbon Steel A216 Gr. WCB    | Stainless Steel A351 Gr. CF8M |
| 3   | Straining Element   |                              | Stainless Steel              | Stainless Steel               |
| 4   | Gasket              | Stainless Steel Spiral Wound | Stainless Steel Spiral Wound | Stainless Steel Spiral Wound  |
| 5   | Studs               | Alloy Steel                  | Alloy Steel                  | Stainless Steel               |
| 6   | Nuts                | Alloy Steel                  | Alloy Steel                  | Stainless Steel               |
| 7   | NPT Plug Blow-off   | Alloy Steel                  | Carbon Steel                 | Stainless Steel               |
| 8   | NPT Plug Gauge Taps | Alloy Steel                  | Carbon Steel                 | Stainless Steel               |

**REFERENCED STANDARDS & CODES**

| CODE             | DESCRIPTION                        |
|------------------|------------------------------------|
| ASME/ANSI B16.5  | Pipe Flanges and Flanged Fittings  |
| ASME/ANSI B16.34 | Flanged, Threaded, and Welding End |

**STANDARD SCREEN SELECTIONS**

| Size      | Liquid       | Open Area | Steam         | Open Area |
|-----------|--------------|-----------|---------------|-----------|
| 1/2" - 4" | 1/16 (.0625) | 41%       | 1/32 (.033)   | 28%       |
| 5" - 8"   | 1/8 (.125)   | 40%       | 3/64 (.045)   | 36%       |
| 10" - 12" | 1/8 (.125)   | 40%       | 30 Mesh Lined | 44.8%     |

**PRESSURE TEMPERATURE RATING**

| Body Material A536/A216 Gr. WCBA351 Gr. CF8M |                  |                  |
|--|------------------|------------------|
| WOG (Non-shock):                             | 285 PSI @ 100 °F | 275 PSI @ 100 °F |
| Saturated Steam:                             | 150 PSI @ 366°F  | 150 PSI @ 366°F  |
| Max Liquid                                   | 80 PSI @ 800 °F  | 20 PSI @ 1000 °F |